

NOTE:  
THE FLASHING SHOWN MAY  
BE ROUND

TRIM EDGES OF  
FLASHING IF REQUIRED

SEAL & RIVET OVER LAPS  
WITH 4MM DIA BLIND RIVETS  
AT 50MM CENTRES (REFER  
DETAIL E, SHEET 1)

10MM UPSTAND TO BE  
TUCKED UNDER RIDGE  
CAP/FLASHING

0.55MM OVERFLASHING

FALL

150 MAX, 100  
MIN. OVERLAP  
(REFER DETAIL  
E)

NOTE: INSTALLATION BY  
LICENCED HOMETECH  
INSTALLER AS PER THE  
SOLATUBE AUSTRALIA  
MANUFACTURING  
SPECIFICATION

0.55 GAUGE OVER  
FLASHING

SEALER FILLETED  
10MM BEAD

4MMX8.9 BLIND  
RIVETS Ø50MM  
CENTRES ACROSS  
SHEET

DETAIL E  
SCALE: 1:1

150 MAX. OVERLAP  
100 MIN.

DETAIL E  
SCALE: 1:1

DETAIL E  
SCALE: 1:1

TRAY TURNED UP AROUND  
PERIMETER OF PENETRATION

BUILDING PAPER BETWEEN  
OVERFLASHING & SUPPORTS

FLASHING TO EXTEND A  
MINIMUM OF ONE METRE  
PAST SOLATUBE  
WHERE  
POSSIBLE

FLASHING NOTCHED  
OVER RIBS OF  
LONG RUN ROOF,  
5MM CLEAR OF  
TRAY

BUILDING PAPER CUT  
AND FOLDED IN A  
TRIANGULAR SHAPE

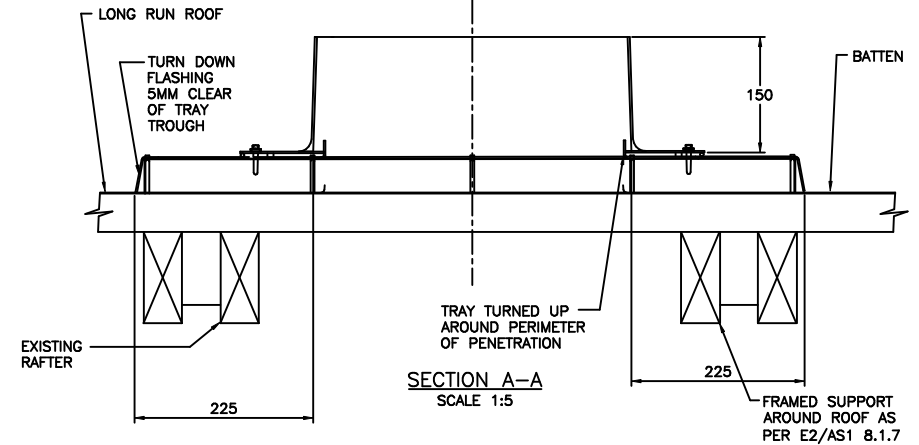
EDGE TURNED  
UP BY 10mm

DETAIL C - 3D  
EXPLODED VIEW  
SCALE: NTS

FOR NARROW RIDGE ROOF PROFILE OR WIDE  
TRAY 60MM WIDE, 1.2MM THICK STRAPS ARE  
REQUIRED AS A FIXING POINT

EXTEND TO A  
MINIMUM OF ONE  
METRE PAST SOLATUBE  
WHERE POSSIBLE

NOTE: INSTALLATION BY  
LICENCED HOMETECH  
INSTALLER AS PER THE  
SOLATUBE AUSTRALIA  
MANUFACTURING  
SPECIFICATION



SECTION A-A  
SCALE 1:5

FRAMED SUPPORT  
AROUND ROOF AS  
PER E2/AS1 8.1.7